



Park Road

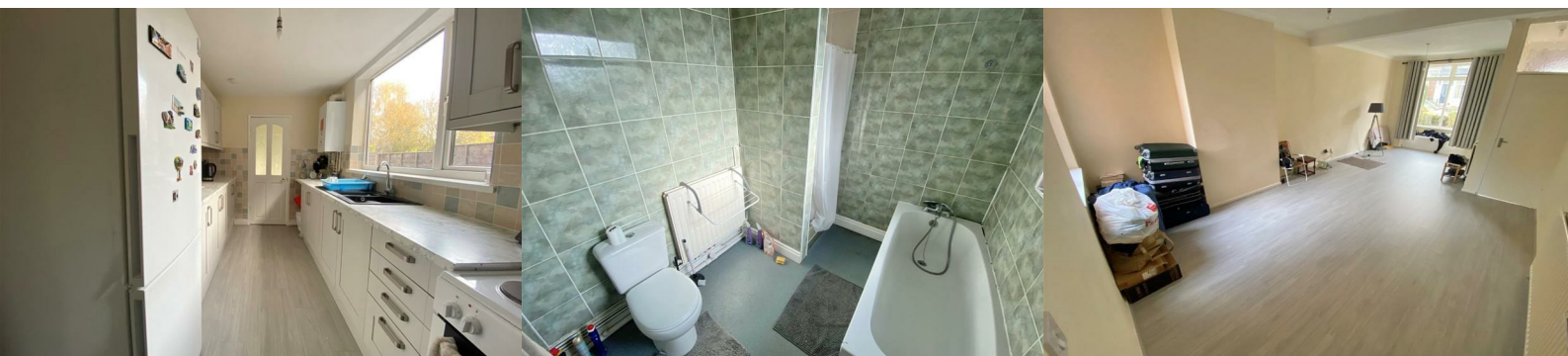
Smethwick, B67 5HR

£1,195 Per Calendar Month



A recently refurbished 3 bedroomed terraced property located in a sought after location in close proximity to Warley Woods, Lightwoods Park and Bearwood High Street. The property features a brand new kitchen and has been fully redecorated throughout to include new flooring. It is double glazed, centrally heated and briefly comprises an open plan lounge diner, modern fitted kitchen and ground floor bathroom off the kitchen. The upstairs accommodation includes 2 large double bedrooms and a good sized single bedroom. Extensive garden to the rear.

It is offered on an unfurnished basis and available immediately. EPC TBC. Council Tax : C.



- Entrance Hallway
- Reception Room
- Kitchen
- Bathroom
- Garden
- Bedroom 1
- Bedroom 2
- Bedroom 3
- Upstairs Toilet

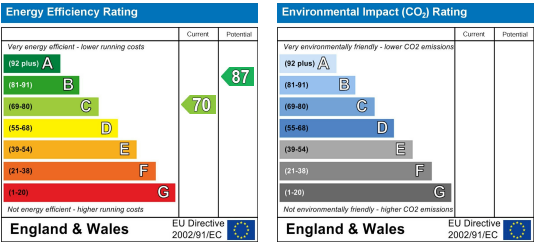
Area Map



Floor Plans



Energy Efficiency Graph



These particulars are intended to give a fair and reliable description of the property but no responsibility for any inaccuracy or error can be accepted and do not constitute an offer or contract. We have not tested any services or appliances (including central heating if fitted) referred to in these particulars and the purchasers are advised to satisfy themselves as to the working order and condition. If a property is unoccupied at any time there may be reconnection charges for any switched off/disconnected or drained services or appliances - All measurements are approximate.

THINKING OF SELLING? If you are thinking of selling your home or just curious to discover the value of your property, Hunters would be pleased to provide free, no obligation sales and marketing advice. Even if your home is outside the area covered by our local offices we can arrange a Market Appraisal through our national network of Hunters estate agents.